

Copilot in Power BI Instructor Demos

To access Copilot in Power BI features, the tenant will need access to either a **Workspace with Power BI Premium** or have **F64 Fabric Capacity**.

Users will also need to manually enable Copilot features in Power BI Desktop.

To enable Copilot features in Power BI Desktop, do the following:

1. Open the Power BI Desktop settings through **File -> Options and Settings -> Options**.
2. In the **Copilot (preview)** settings, select the workspace that has **Power BI Premium** or **F64 Fabric Capacity**.
3. In the **Preview features** settings, select the following checkboxes:
 - 1) Write DAX queries with Copilot
 - 2) Summary with Copilot visual
 - 3) Improve Q&A with Copilot
 - 4) Measure descriptions with Copilot
 - 5) Copilot chat pane in report view
4. Select **OK** when finished.

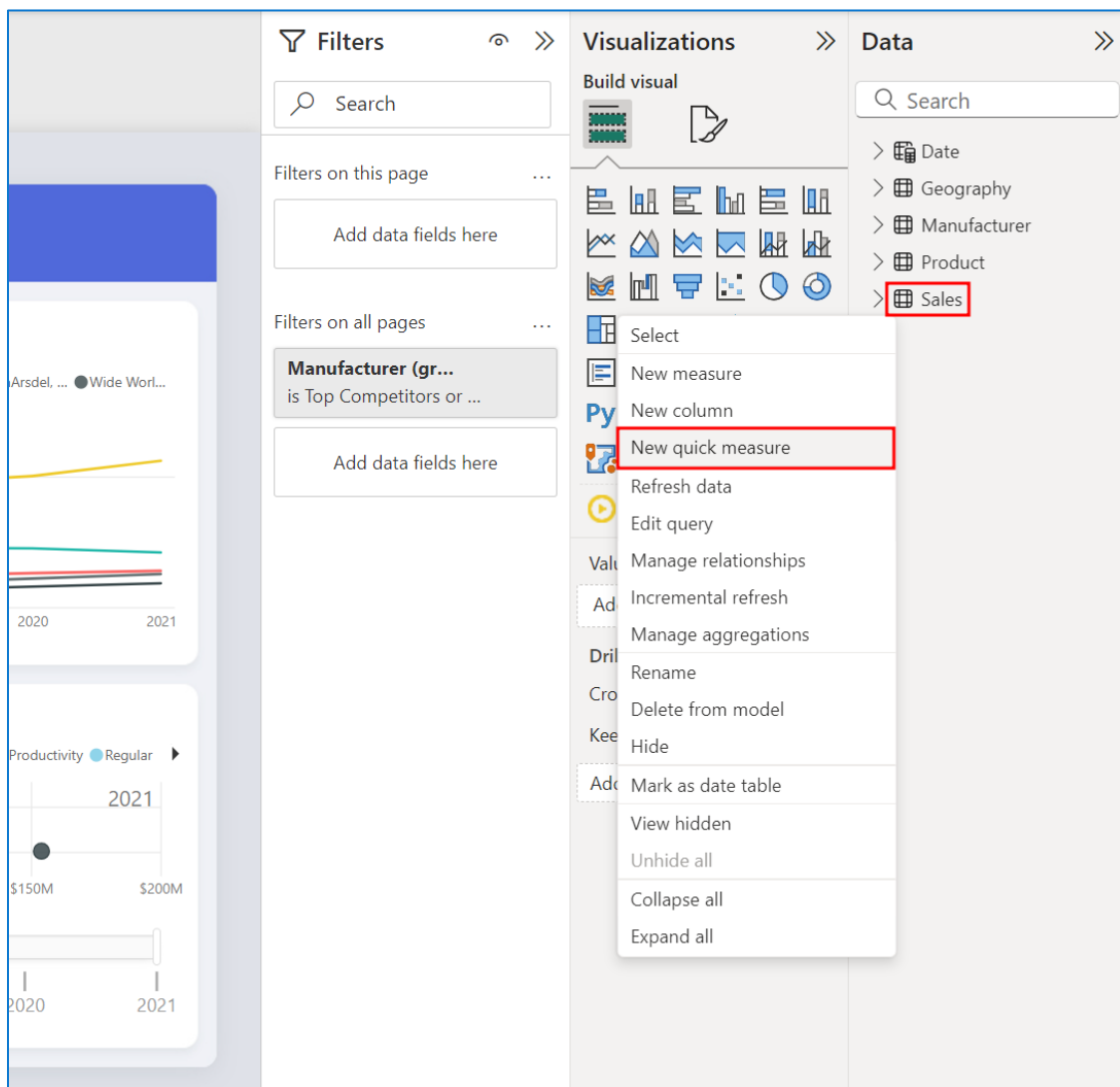
Copilot Quick Measures

1. Start by opening the report users created titled **MyFirstPowerBIModel.pbix** located in the following location:

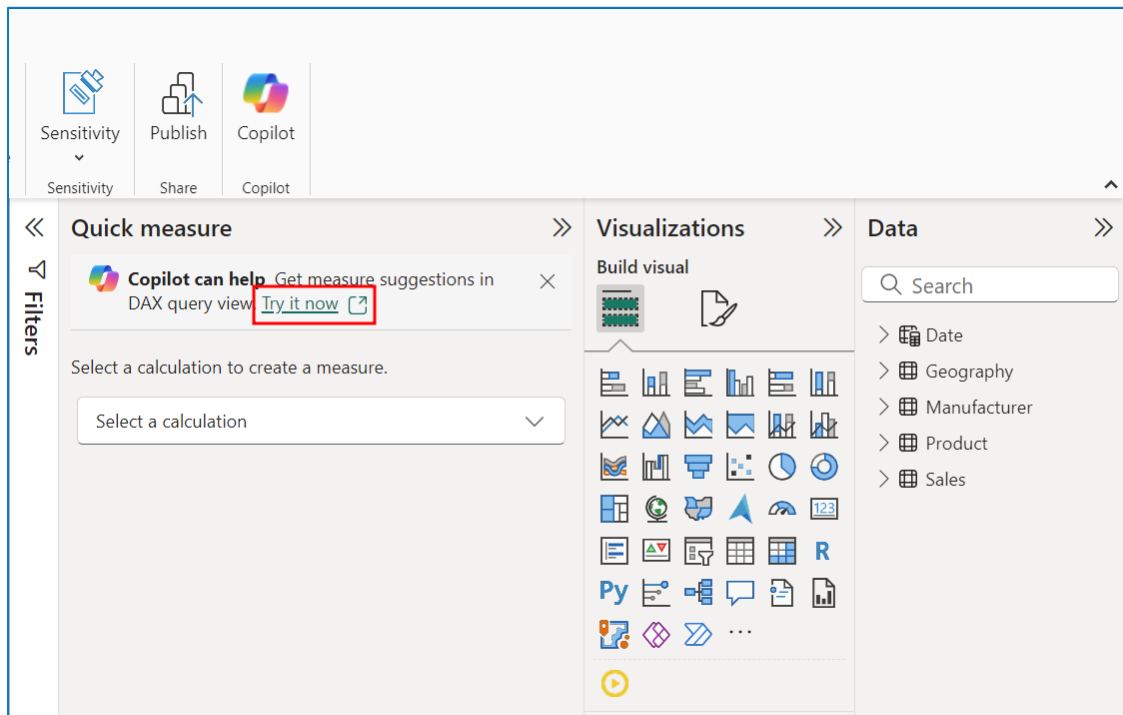
C:/DIAD/Reports/MyFirstPowerBIModel.pbix

*If this demo is presented before users create their report, use the **Lab 5 solution.pbix** file*

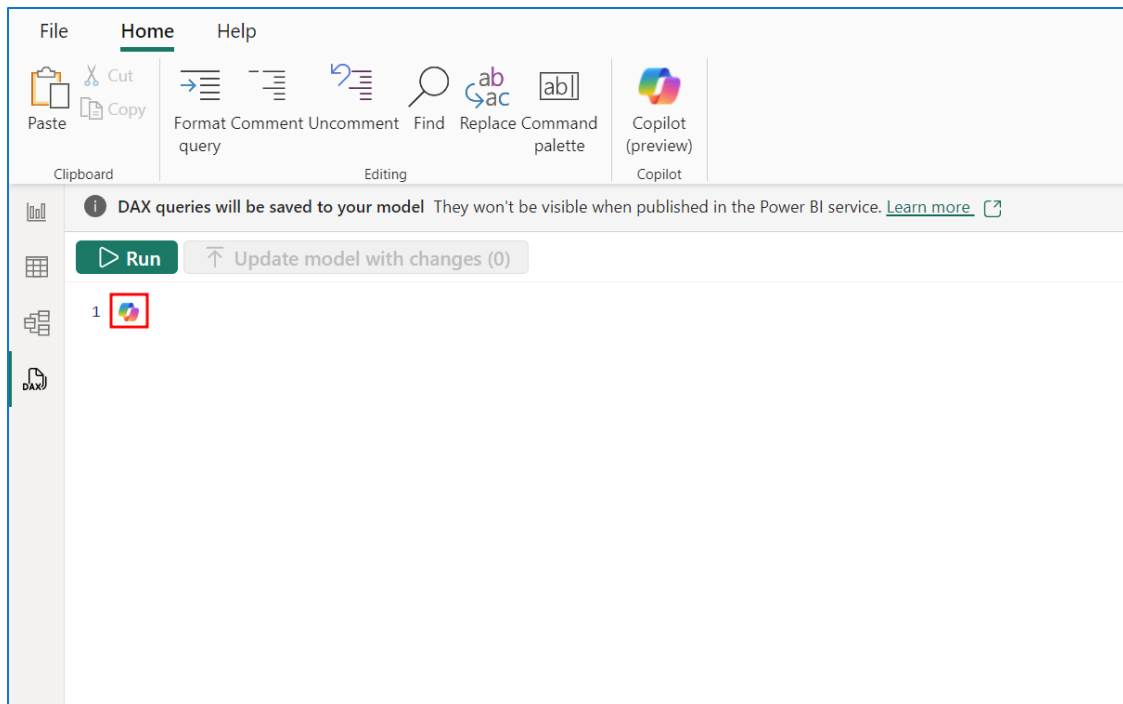
2. Right-click the **Sales** table and select **New quick measure**.



3. In the **Quick measure** pane that opens, select the *Try it now* link under **Copilot can help**.



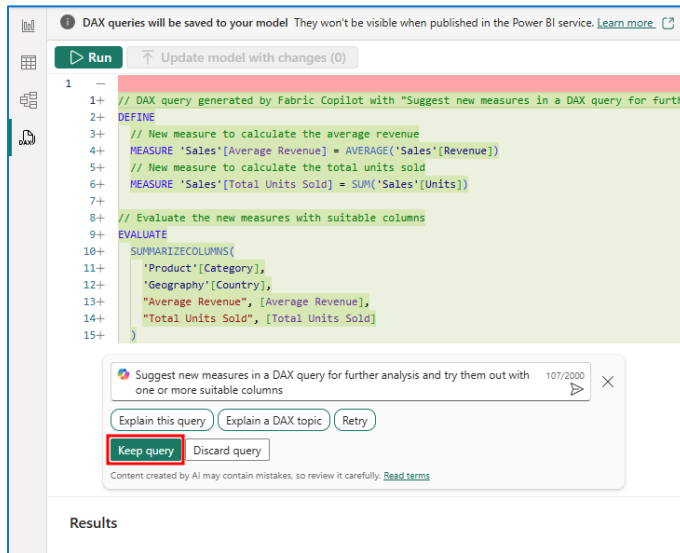
4. In the DAX query editor that opens, delete everything that's prepopulated in the query window and select the Copilot icon in the query editor next to line 1.



5. Select the **Suggest measures** button in the Copilot window that opens

Some suggestions given by Copilot may be incorrect. It's important to stress the variability of Copilot responses and to always check the results before adding the measure to a data model.

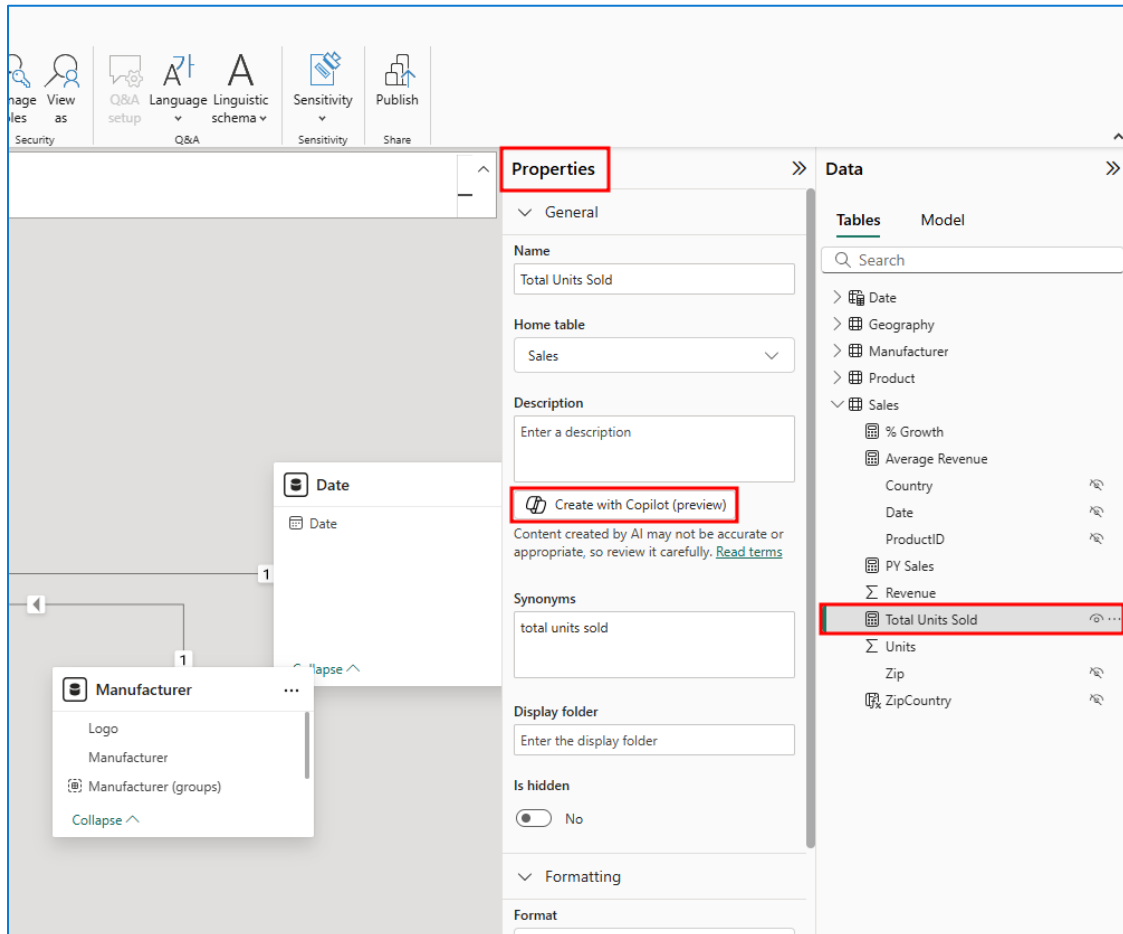
6. If the query looks okay and is error-free, select **Keep query** in the Copilot prompt window.



7. Select **Update model with changes (#)** at the top of the DAX query editor.
8. Select **Update model** in the *Are you sure?* window.

Creating Measure Descriptions with Copilot

1. Navigate to the **Model view** and select one of the previously suggested measures added by Copilot.
2. In the **Properties** pane, select the **Create with Copilot (preview)** button under **Description**.



3. After Copilot generates a measure description, select **Keep it** in the **Review the measure description...** window.

- The generated description will then populate in the measure's **Description** field under **Properties**.

The screenshot displays the Microsoft Power BI Desktop interface. The top navigation bar includes options for Language, Linguistic schema, Sensitivity, and Publish. The main workspace is divided into two panes: 'Properties' and 'Data'.

Properties Pane:

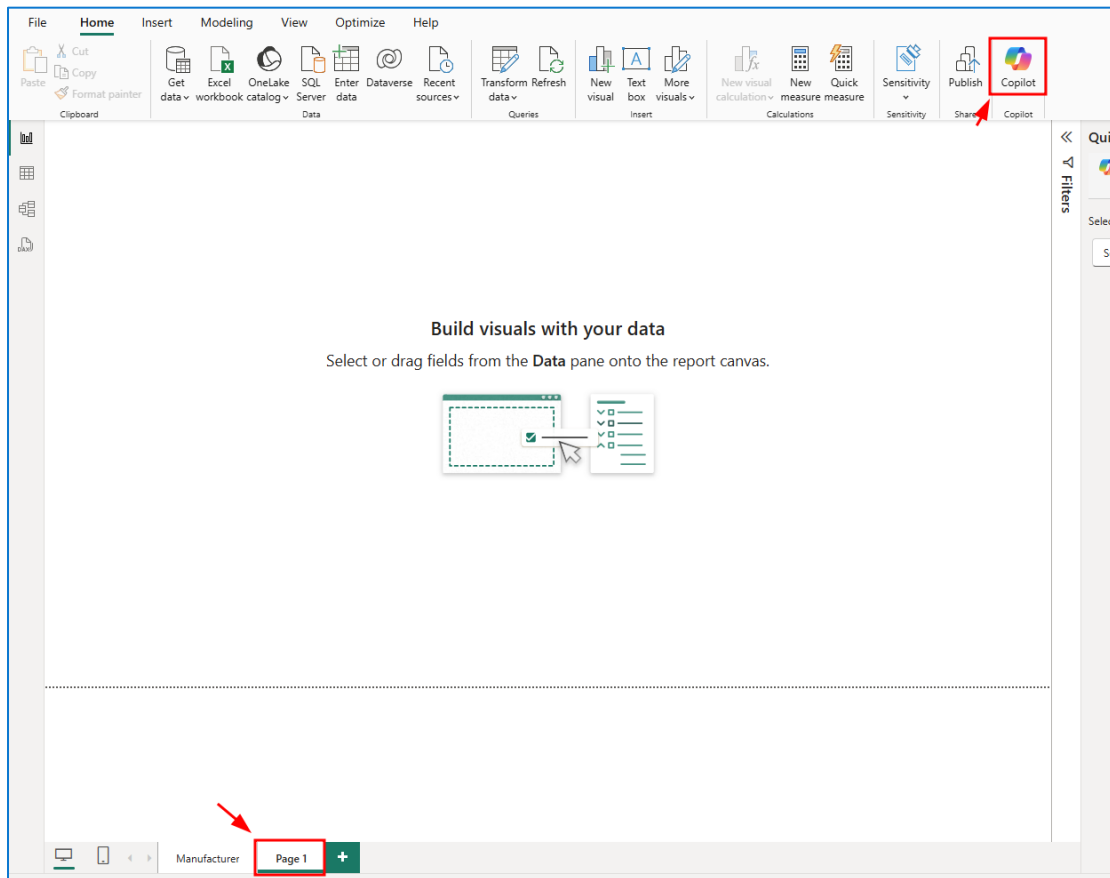
- General:**
 - Name:** Total Units Sold
 - Home table:** Sales
 - Description:** Calculates the total number of units sold by summing the 'Units' column in the 'Sales' table. (This field is highlighted with a red box in the original image.)
 - Synonyms:** total units sold
 - Display folder:** Enter the display folder
 - Is hidden:** No

Data Pane:

- Tables:** A search bar and a list of tables including Date, Geography, Manufacturer, Product, and Sales.
- Model:** A list of measures and columns including % Growth, Average Revenue, Country, Date, ProductID, PY Sales, Revenue, Total Units Sold (highlighted), Units, Zip, and ZipCountry.

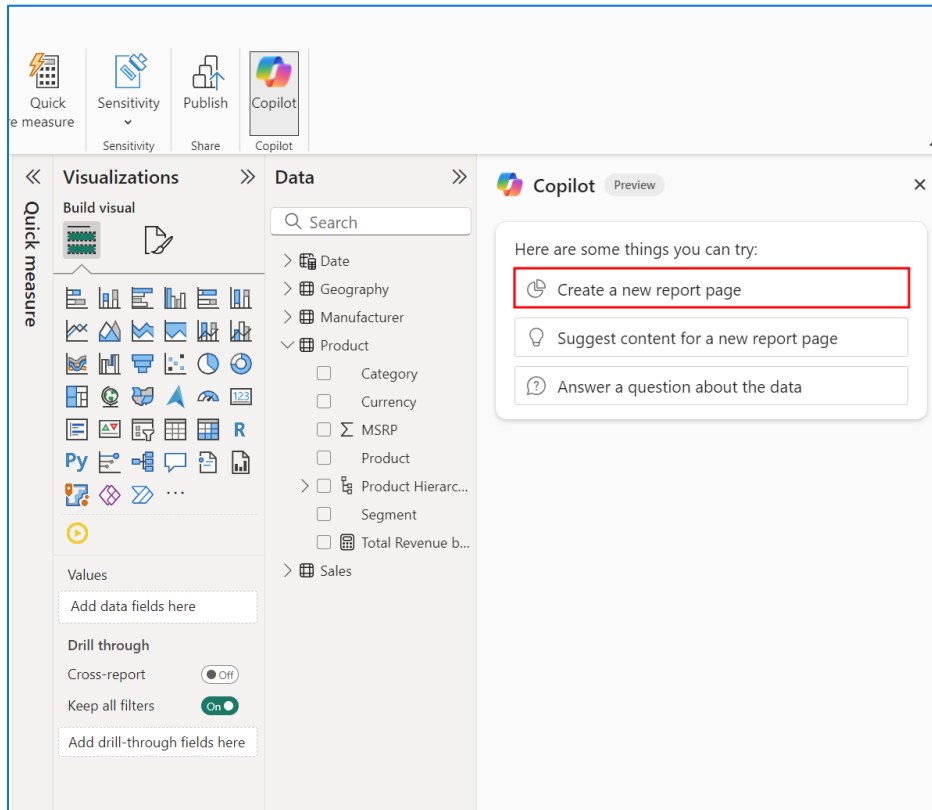
Creating Reports with Copilot

1. Navigate to the **Report view** and create a new page at the bottom of the report canvas.
2. Select the **Copilot** button under the **Home** tab from the top ribbon.



3. In the **Copilot** pane that opens to the right, select **Get started**.

4. In the **Copilot** pane, select **Create a new report page**.



After Copilot evaluates the context of your data model, it will ask if you want to proceed with this approach.

5. Copilot will then generate a report page based on your data model.

